

# Allendale community foundation For Good. For Ever.

November 2007 Community Report

An affiliate of the  
Grand Haven Area  
Community Foundation



P O Box 365  
Allendale MI 49401  
616-895-4777  
[www.allendalecf.org](http://www.allendalecf.org)



## *A Big Thank-You to Our "Silent Friends"*

Every year, the Foundation is given gifts anonymously. Since we respect the wishes of the giver, we would like to take this opportunity to publicly **thank you for your "silent" support!**

Still others are anonymously leaving gifts to the Foundation in their trusts and wills. Again, thank you so much for catching the philanthropy vision!

**"We make a living by what we get, we make a life by what we give."**

~ Sir Winston Churchill

## *Could Your Non-Profit Group Use Some Financial Help from the Foundation?*

The Allendale Community Foundation:

- Encourages programs which are collaborative, comprehensive, and have potential for continuity.
- Encourages leveraging and matching grant opportunities involving multiple funding sources.
- Supports "seed money" requests to assist innovative projects.
- Encourages programs and projects focused on problem prevention rather than cure.



We encourage you to call and talk with a member of our grants committee before you start to write a proposal. Please call Randy Weener at 895-9150, Bob Bosch at 895-6978, Lee Scholma at 895-4151, or Jim VanderVeen at 895-4496.

Grant applications are available on line and at the Allendale Charter Township office, located at 6676 Lake Michigan Drive, Allendale.

## *The Time to Take Advantage of This Tax Incentive is NOW!*

For the remainder of 2007, people age 70 1/2 and older can transfer up to \$100,000 **this year only** from IRAs to charity...**without incurring income taxes today or estate tax in the future!** You may qualify for an extraordinary tax incentive if you:

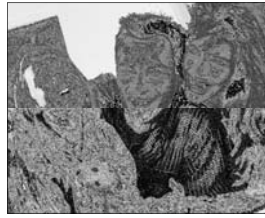
- Need to take a Required Minimum Distribution (RMD) from your IRA in 2007 and want to exclude the RMD from your taxable income
- Want to help reduce your taxable estate
- Want to avoid having to reduce itemized deductions on your federal tax return and also save state income tax
- Are concerned about your Social Security income being taxed



Unless Congress extends this legislation, **this opportunity will expire on December 31, 2007.**

Please call Ann Tabor at the Grand Haven Area Community Foundation at 842-6378 for details!

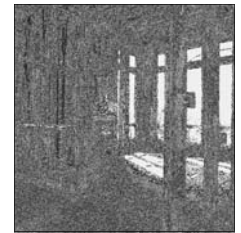
**\$10,219**  
*was given back to the  
 Allendale Community  
 in 2007 through  
 grants from the  
 Greatest Needs Fund!*



**Circle of Parents**



**Allendale  
 Community  
 Policing**



**Habitat for  
 Humanity**



**Child Safety  
 Seat  
 Inspections**



**Students  
 Against  
 Destructive  
 Decisions**



**40's through  
 60's Museum**



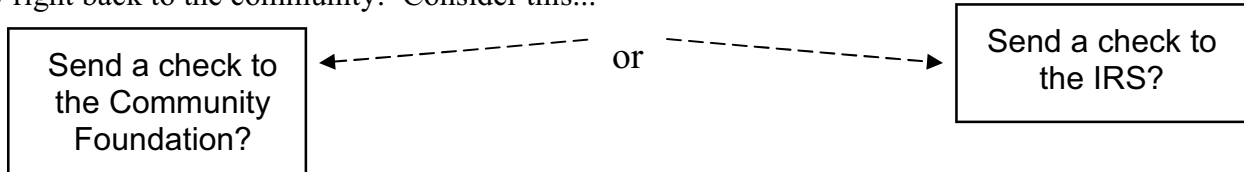
**Teacher  
 Mini Grants**



**Lifelong Learners**

***Control Where Your Tax Dollars Go!***

We all pay taxes...can't get around that one! But, by supporting the Community Foundation, you not only get a tax break, but **you direct your taxes to be used in Allendale!** How wonderful to be able to give your money right back to the community! Consider this...



	Single	Single	Married	Married	Corporate
<b>Amount of gift</b>	<b>\$200</b>	<b>\$200</b>	<b>\$400</b>	<b>\$400</b>	<b>\$10,000</b>
<b>State tax credit</b>	\$100	\$100	\$200	\$200	\$5,000
<b>Federal tax rate</b>	15%	28%	15%	28%	34%
<b>Federal tax savings</b>	\$30	\$56	\$60	\$112	\$1,700
<b>Total tax savings</b>	\$130	\$156	\$260	\$312	\$6,700
<b>Actual cost of gift</b>	<b>\$70</b>	<b>\$44</b>	<b>\$140</b>	<b>\$88</b>	<b>\$3,300</b>

Contributions may be sent to:

**Allendale Community Foundation  
 P O Box 365  
 Allendale MI 49401**

## 2007 Scholarship Recipients



**Monica Ryman** received a \$500 scholarship from the **Lindsey Bakale Memorial Scholarship Fund!**  
Monica

graduated from Allendale Public Schools and will attend Michigan State University!



**Kelly Brown** received a \$500 scholarship from the **Herman J. Wyngarden Memorial Scholarship Fund!**  
Kelly

graduated from Allendale Public Schools and will attend the University of Michigan!



**Cameron Kuiper** received a \$500 scholarship from the **Chamber of Commerce Scholarship Fund!**  
Cameron graduated from

Allendale Public Schools and will attend Grand Valley State University!

## Thank-you to the Foundation from the Grant Recipients!

"On behalf of the Allendale Public School Board, I would like to extend sincere gratitude for supporting our staff and special programming. The teacher mini-grants that we have been awarded will enhance lessons and engage students to help them discover success. Thank you for encouraging professional development for our teachers."  
~ Catherine Ceglarek, Superintendent of Allendale Public Schools



"We thank the Foundation for the generous grant for the Habitat build at 5216 Windfield in Allendale for the Holbrook family. Thank you for sharing our vision of strengthening families and communities in service to God through partnerships, house building, and affordable home ownership."  
~ Pam Doty-Nation and Brenda DenHouten, Habitat for Humanity of Kent County

"On behalf of the Safe Kids Lakeshore, I would like to thank the Foundation for funding the Allendale Safe Kids in operating a monthly car seat inspection station at the Township fire station. We appreciate the collaboration of agencies such as the Ottawa County Sheriff's Department, Allendale Township, and the Foundation to assist in helping to prevent injuries and deaths to our community's children."  
~ Kim Francis, Program Coordinator



## 2006 Teacher Mini-Grant Recipients!



Spring 2006 grant recipients shown from left to right are Julie Hilzey, Amy McMurray, Kari Powell, Richelle Rybinski, Norine Fox, and Didier Couvelaire. Jennifer Mendes and Thea Gabrielse are not pictured.

## *Funds in the Allendale Community Foundation*

### **Allendale Greatest Needs Fund**

- ABC Coalition Fund
- Allendale Chamber of Commerce Scholarship Fund
- Allendale Christian School Endowment Fund
- Allendale Historical Society Endowment Fund
- Allendale Lifelong Learners Fund
- Allendale Public School Fund
- Allendale Township Library Endowment Fund
- Allendale Veterans Memorial Endowment Fund
- Lindsey Bakale Memorial Scholarship Fund
- Borculo Christian School Education Fund
- David James Merkle Memorial Scholarship Fund
- Family Life Center of West Michigan Fund
- Jim and Candy Kraker Family Fund
- Love J. P. Fund
- Miss Allendale Scholarship Endowment Fund
- New Focus National Fund
- Ellna Rotman Camp Fund
- Sietsema Family Fund
- T. J. and Skylee Starr Sikma Memorial Fund
- Herman J. Wyngarden Memorial Scholarship Fund

## *Allendale Community Foundation Board*

- Bob Bosch** 895-6978
- Pam DeJong** 895-5139
- Gary Gemmen** 895-6412
- Carl Jesser** 895-6382
- Carl Piersma** 895-9000
- Lee Scholma** 895-4151
- Patricia Stephenson** 895-7816
- Ruth Tanis** 895-4327
- Jim VanderVeen** 895-4496
- Randy Weener** 895-9150

### *Holiday Gift Exchanges Getting Crazy?*

**In lieu of exchanging gifts** between friends and family, consider pooling those dollars into one gift to the Allendale Community Foundation!



Give in memory of that family member or friend who was once such an important part of your circle! **Give a gift that keeps on giving!**

## *November 2007 Featured Fund... Allendale Veterans Memorial Fund*

The **Allendale Veterans Memorial Endowment Fund** was established to provide services such as:

- Annual Veterans Day Service
- Purchase of flags for veterans at the Allendale Township Cemetery
- Perpetual care for the Veterans Memorial Garden in the Township Community Park

The following veterans have already been honored:

- ~Howard Beelen, WWII, US Navy
- ~Gerald Kraker, WWII, Army Air Force
- ~Leonard Brink, WWII, US Army
- ~Dennis D. Nagelkirk, Killed in action in Vietnam
- ~Lee Broadwell Jr, US Merchant Marines, US Army
- ~John Camden Rolls, WWI, Navy
- ~Marvin Hall, WWII, Army Air Corp
- ~Blain Sessions, WWII, US Merchant Marines
- ~Henry G. Heuvelman, 82nd Airborne, Korean War
- ~Robert D. Sheridan, US Merchant Marines/U S Army
- ~Jonathan W. Kooistra, Army

**I would like to give a gift of \$ \_\_\_\_\_ to the Allendale Veterans Memorial Endowment Fund.**

Your name \_\_\_\_\_

Address \_\_\_\_\_

Telephone \_\_\_\_\_ Email \_\_\_\_\_

**In honor of** \_\_\_\_\_

**Time period of service** \_\_\_\_\_

**Branch of service** \_\_\_\_\_